

LAYMAN'S GUIDE TO THE **ADA**

The Americans with Disabilities Act (ADA) specifies that public accommodations must comply with basic nondiscrimination requirements that prohibit exclusion, segregation, and unequal treatment. They also must comply with specific requirements related to architectural standards for new and altered buildings; reasonable modifications to policies, practices, and procedures; effective communication with people with hearing, vision, or speech disabilities; and other access requirements. The below guidelines will provide a quick reference to insure that your facility maintains signage that is compliant with the ADA.

For more information about the ADA, contact the U.S. Department of Justice or visit their web site at www.usdoj.gov.

TACTILE & VISUAL CHARACTERS

Type Case

Characters must be uppercase for easy legibility.



Font Style

Characters must be of a *sans serif* font style; characters cannot be italic, oblique, script, highly decorative, or of other unusual forms.

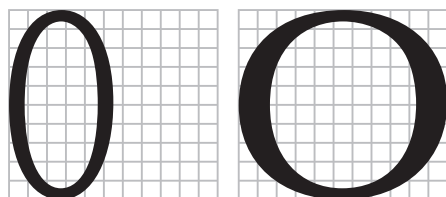
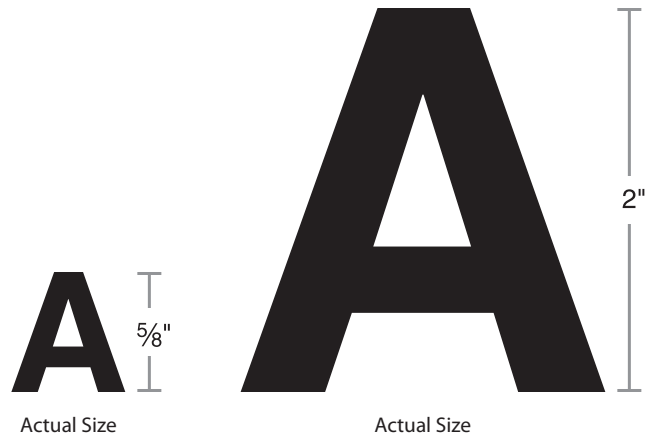


Character Height

Minimum character height: 5/8"
Maximum character height: 2"



Text limitations may exist due to minimum and maximum character height requirements per individual sign.

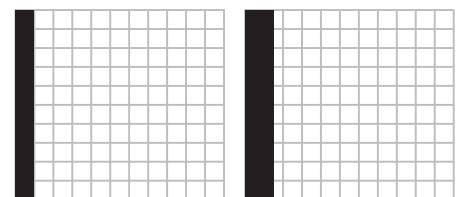


Characters must not appear too narrow.

Characters must not appear too wide.

Width-to-Height Ratio
Minimum 55%, Maximum 110%

Stroke-to-Height Ratio
Minimum 10%, Maximum 15%



Characters must not appear too thin.

Characters must not appear too thick.

CHARACTER SPACING

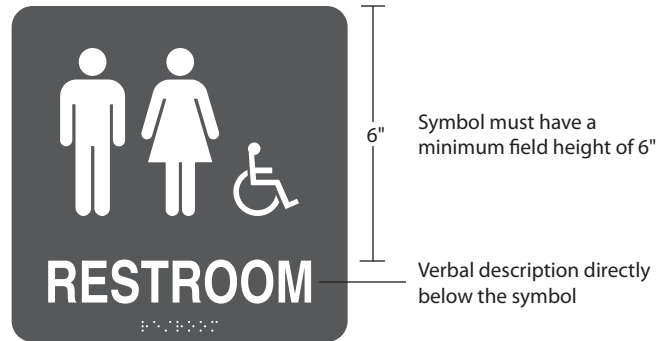
$\frac{1}{8}$ " - $\frac{3}{8}$ " spacing between the two closest points of adjacent tactile characters.



PICTOGRAM (SYMBOL) SIGNS

Equivalent verbal description must be placed directly below the symbol for permanent rooms.

Border dimension of the area containing the symbol must have a minimum height of 6". No logos, text, or other elements are allowed within this 6" field.



RAISED CHARACTERS & BRAILLE

Tactile characters must be raised a minimum of $\frac{1}{32}$ ".

On signs which designate permanent rooms and spaces, tactile characters must be accompanied by Grade 2 Braille, a series of contractions that forms a shorthand version of braille. Braille must be raised a minimum of 0.025" and a maximum of 0.037".



Signs that are designed to be read by touch should not have sharp or abrasive edges.

FINISH & CONTRAST

Characters and background must have an eggshell, matte, or non-glare finish. For easy readability, avoid signs with a shiny or glossy finish including certain types of glass, metal, and stone finishes.



0% text
100% background

0% text
70% background

30% text
100% background

15% text
85% background



Dark characters on
a light background



Light characters on
a dark background

To increase legibility for persons with impaired vision, text must contrast with the background by a minimum of 70%.

MOUNTING LOCATION & HEIGHT

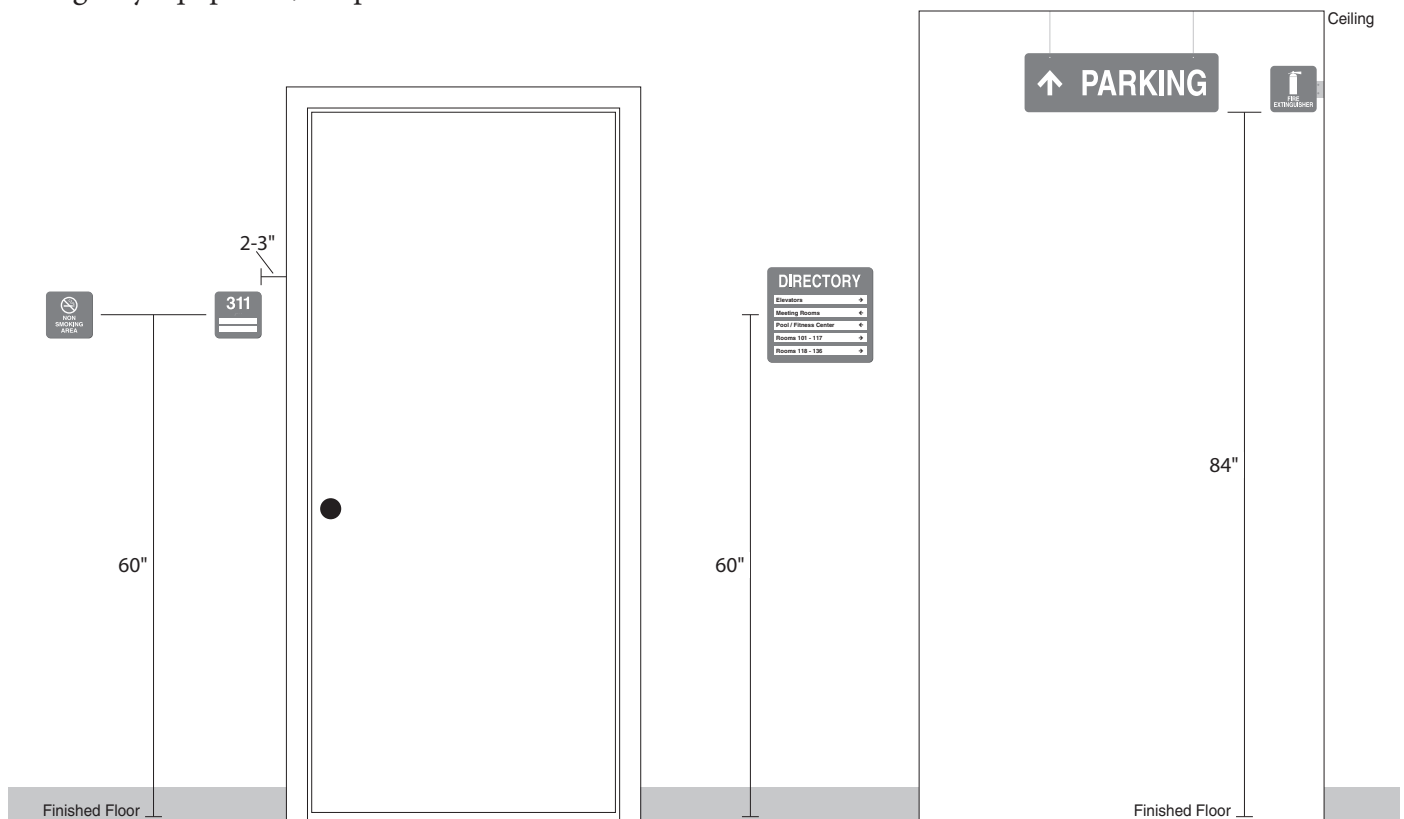
Wall Mounted Signs

The center of wall mounted signs must be 60" above the finished floor.

Signs located near a door must be mounted on the latch side of the door 2" - 3" from the door jamb, or to the right side of double doors. If this space is not available, signs should be located on the nearest adjacent wall.

Perpendicular & Ceiling Mounted Signs

Signs that project from the wall (perpendicular signs) or ceiling (overheads) must have a clearance of 84" from the finished floor to the bottom of the sign. Signs should not interfere with or block the function of any doors, emergency equipment, or sprinklers.



ACCESSIBLE PARKING

Accessible parking spaces must be designated as reserved by a sign showing the symbol of accessibility. Such signs must be located so they cannot be obscured by a vehicle parked in the space.

ACCESSIBLE PARKING SPACES	Total Number of Parking Spaces in Lot	Required Minimum Number of Accessible Spaces
	1 to 25	1
26 to 50	2	
51 to 75	3	
76 to 100	4	
101 to 150	5	
151 to 200	6	
201 to 300	7	
301 to 400	8	
401 to 500	9	
501 to 1000	2% of total	